

Canaan Carrier

<http://www.canaan-vt.org>



JULY 2014

THANK YOU

On behalf of the Canaan Recreation Committee members we would like to thank the following groups/individuals for their generous donations. Your commitment to helping the community is sincerely appreciated.

Our goal is to continue to make a difference by providing a safe environment. With the help of your donations from supporters such as you, you will continue to see improvements at the Canaan Recreation Park.

THANKS AGAIN FOR YOUR SUPPORT OF OUR EFFORTS!

Neil & Louise Tillotson Fund of the NH Charitable Foundation

Border Lions Club

Jane Paquette

Dwight McLaughlin

Ronald & Dallas Chase

Saralyn & David Corliss

We are sorry if we omitted names; however we are grateful for your contributions.

CHIEF'S CORNER

VACATION SAFETY TIPS

It's summer time, and time for a vacation! Many of us may be ready for or planning a vacation for the summer months. Here are some safety tips to help make your vacation safe and enjoyable. Vacation safety actually begins while you are still at home and begins with planning for safety!

Before You Leave

- Depending on the duration of your vacation abroad, pack sufficient medicines to meet any specific needs of your family members. You may need to bring along your family's medical information, prescription medications etc.
- Inform your trusted relatives and friends of your itinerary so that you can be contacted for emergencies.
- If you leave your house vacated, you may want to stop or suspend all deliveries – an accumulation of newspapers and mail will attract the attention of would-be burglars. It is highly advisable to ask your trusted relatives, friends or neighbor to check your home regularly and collect mail and newspapers for you.
- Make sure that electrical appliances are unplugged, the gas supply is shut off, and the water taps (or supply) are tightly turned off.
- Clean out your wallet/purse before you go; take only essential credit cards.
- Pack things of value and great necessity such as medicine and jewelry in a carry-on baggage item that will stay with you.
- Discuss with your family members about the safety and security precautions. Set some essential safety rules for your kids.

LISTER'S MESSAGE

Per State Statues: If someone is now in a Nursing Home they cannot claim homestead on the parcel they own, unless the nursing home is a recovery from a surgery.

JUSTICES OF THE PEACE

The Town of Canaan is seeking a Republican three member board to hold a Republican Caucus for the purpose of nominating Justices of the Peace for the November elections. Anyone interested in being part of this three member board please contact the Town office at 266-3370. The nomination caucus will need to be held before August 29th which is the last day for Justice of the Peace nominations to be filed with the Town Clerk.



Canaan Historical Society

We have had a number of people at the Historical Society this spring researching ancestors or just looking for information on certain aspects of the town, such as the railroad station in Beecher Falls and the Ethan Allen factory.

Harland Crawford has been gathering information and preparing for the June 28th South Canaan memories session. We are again planning to enter a float in the Stewartstown Day parade and hope to have as much fun and success as we had last year. Volunteers to help with the design and construction of the float are always welcome.

Our planned summer exhibit, "Toys And Amusements From An Earlier Age", is being assembled as display items are brought in. If you have antique or vintage toys or children's entertainment and sports items (preferably pre-1965) you would like to exhibit, please notify us or bring them in.

Thank you and have a great summer

Canaan Historical Society

Dennis Fuller Chairman PH#802-266-3989

Joan Cowan Curator PH#802-266-7766

PO Box 214

Canaan, Vermont 05903

canvthistsoc@gmail.com

www.canaanvthistoricalsociety.org

Museum hours: Monday—Friday from 2 p.m. to 4 p.m.

Solid Waste Update

As we reported in the Town Report, Vermont passed the Paint Product Legislation (Act 58) This legislation implemented a new program that will begin July 1, 2014. Under this program, paint manufacturers are responsible for collection and managing left over architectural paint (both oil and latex). This program will allow for free paint recycling / disposal at many convenient locations throughout the state. The Canaan Transfer Station has been approved to be a PaintCare Drop-off Site.

The following requirements were established by the legislated program and we will manage the program accordingly. This is a benefit to all residents of the town of Canaan. It is very important that you become familiar with the requirements of this program. We are providing this information so you will know what is allowed and what is not under the Vermont Paint Stewardship Program. Note:

- ✓ Program Products: These products have fees when you buy them and are accepted for free at our Canaan Transfer Station. LEAKING, UNLABELED AND EMPTY CONTAINERS ARE NOT ACCEPTED AT THE DROP OFF SITE.
- ✓ Non- Program Products: THESE ARE MATERIALS THAT WILL NOT BE ACCEPTED AT THE DROP OFF SITE. These materials will be accepted at our scheduled HHW Event to be announced.
- ✓ Attached information fact sheet. Any questions see transfer station operator.

Wastewater Treatment Plant and Collection System Project Update

- ✓ Currently is about two weeks behind schedule mostly due to weather conditions.
- ✓ The pump station at the end of Hall Stream is currently out of commission due to worn out parts and is being manually maintained with Bolens keeping the pumping station emptied. This pump station will be the first to be replaced.

Sewer Rents

On May 21st, 2014 we held an informational meeting to discuss the new rates that will be charged to cover the bond payment which will be paid by those connected to the collection system. We also discussed the Operating and Maintenance and Capital Reserve Account charges that would be charged to all connected and non-connected properties that are served by the public sewer system of the Town and from which, either directly or indirectly, sewage is being, or can be, collected from the use of the premises.

✓ The billings for those connected to the collection system will be billed quarterly for the following expenses:

- Debt Service / Capital Reserve Expense
- Plant Operation And Maintenance Expense
- Collection System Operation and Maintenance Expense

✓ The billing for those not connected to the collection system and have septic systems will be billed yearly with their tax bill which is a separate expense and not a tax for the following:

- Capital Reserve
- Plant Operation and Maintenance Expense

Note: See attached 2014 Wastewater Sewer Rates/Payment Details and Schedule.

Note:

- ✓ There is no charge to use the sewer plant for Stewartstown or Canaan residents with septic systems other than the annual O/M and Capital Reserve Account.
- ✓ Towns outside of Canaan and Stewartstown will be charged \$0.11 per gallon to use the sewer plant for septic sewage. Rates will be reviewed annually. These fees will go towards paying for the O/M expenses. This will help reduce O/M expense.
- ✓ Bolens is the only authorized septic hauler for the Stewartstown and Canaan to bring in septic sewage into the Canaan/Stewartstown Wastewater Treatment Plant.

- We have a daily capacity for septic sewage of 6000 gallons. It would be nearly impossible to manage more than one hauler and keep track of our daily capacity limits.
- Bolens is also part of our Emergency Response Plan when problems occur with our waste systems and we need emergency services.
- Local business: This is one of our considerations, which is part of our Town Purchasing Policy.

Program Products

These products have fees when you buy them and are accepted for free at drop-off sites:

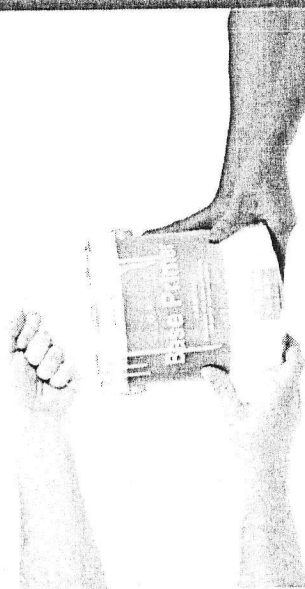
- Interior and exterior architectural paints: latex, acrylic, water-based, alkyd, oil-based, enamel (including textured coatings)
- Deck coatings, floor paints (including elastomeric)
- Primers, sealers, undercoaters
- Stains
- Shellacs, lacquers, varnishes, urethanes (single component)
- Waterproofing concrete/masonry/wood sealers and repellents (not tar or bitumen-based)
- Metal coatings, rust preventatives
- Field and lawn paints

Leaking, unlabeled and empty containers are not accepted at drop-off sites.

Non-Program Products

- Paint thinners, mineral spirits, solvents
- Aerosol paints (spray cans)
- Auto and marine paints
- Art and craft paints
- Caulk, epoxies, glues, adhesives
- Paint additives, colorants, tints, resins
- Wood preservatives (containing pesticides)
- Roof patch and repair
- Tar and bitumen-based products
- 2-component coatings
- Deck cleaners
- Traffic and road marking paints
- Industrial Maintenance (IM) coatings
- Original Equipment Manufacturer (OEM) (shop application) paints and finishes

For information about recycling and proper disposal of non-program products, please contact your garbage hauler, local environmental health agency, household hazardous waste program or public works department.



Vermont Paint Stewardship Program

Each year about 650 million gallons of architectural paint is sold in the United States. Did you know that about 10 percent goes unused and is available for recycling?

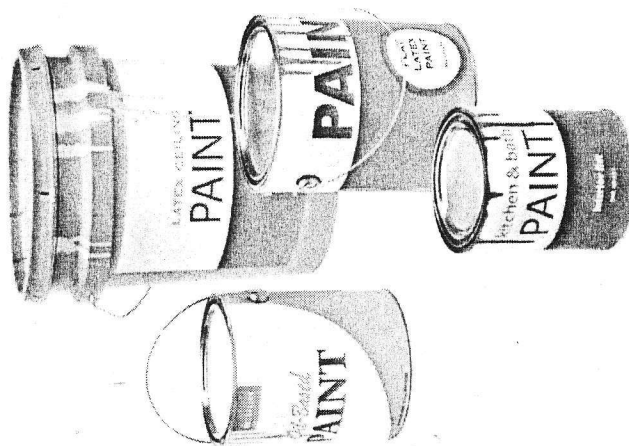
Vermont's Paint Stewardship Law requires the paint manufacturing industry to develop a financially and environmentally sustainable program to manage postconsumer architectural paint. The program includes: education about buying the right amount of paint, tips for using up remaining paint and setting up convenient recycling locations throughout the state.

PaintCare is a non-profit organization established by paint manufacturers to run the program in Vermont and any state with a paint stewardship law.



Recycle with PaintCare

About the Vermont Program



Places to Take Old Paint

Paint recycling is more convenient with PaintCare. We set up paint drop-off sites throughout Vermont. To find your nearest drop-off site, use PaintCare's search tool at www.paintcare.org or call our hotline at (855) 724-6809.

How to Recycle

PaintCare sites accept all brands of old house paint, stains and varnish – even if they are 20 years old! Containers must be five gallons or smaller, and a few types of paint are not accepted. See back panel for lists.

All PaintCare drop-off sites accept at least five gallons of paint per visit. Some sites accept more. Please check with the site in advance to make sure they can accept the amount of paint you would like to recycle.

Make sure all containers of paint have lids and original labels, and load them securely in your vehicle. Take them to drop-off sites during their regular business hours. We'll take it from there.

What Happens to the Paint?

PaintCare will make sure that your leftover paint is remixed into recycled paint, used as a fuel, made into other products or properly disposed.

Who Can Use the Program?

In addition to residents, this program is available to trade painters, contractors and other businesses with one restriction: If your business produces more than 220 pounds (about 20-30 gallons) of hazardous waste per month, you may use the drop-off sites for your latex paint only and not for your oil-based paint. To learn more about the 220 pound restriction, contact PaintCare.

Large Volume Pick-Up

If you have at least 300 gallons of paint to recycle at your home or business, ask about our pick-up service. It takes a few weeks to arrange an appointment, but it's easier for you and saves space at drop-off sites. Please call for more details or to request an appointment.



PaintCare Recovery Fee

PaintCare is funded by a fee paid by paint manufacturers for each can of paint they sell in the state. Manufacturers pass the fee to retailers, who then apply it to the price of paint. Most stores choose to show the fee on their receipts, but it is optional. Fees are based on the size of the container as follows:

Half pint or less	\$ 0.00
More than a half pint to less than 1 gallon	\$ 0.35
1 gallon	\$ 0.75
More than 1 gallon to 5 gallons	\$ 1.60

Not a Deposit

The fee is not a deposit – it is part of the purchase price. The fees are used to pay the costs of running the program: recycling, public education, staffing and other expenses.

Contact Us

Please visit www.paintcare.org or give us a call at (855) 724-6809 to find a drop-off site or learn more.

Town of Canaan
Wastewater Sewer Rate 2014 Payment Details and Schedule
Total Sewer Plant O/ M Expense for all Users Connected / Not Connected.

ECU CHARGES:

- 1) ECU units charged per current Equivalent Connector Units rate sheet. This includes all properties with septic systems and those connected to the collection system.
 - a. Each septic system user was given a rating of 1 ECU unit and resulted in a total of 307 ECU's.
 - b. There are 239 connected collection system users. There are more classifications for the collection system users and results in a total of 469.83 ECU's.
- | | | | |
|--------------------------------------|------------|-------------|---------------|
| i) Number of Septic Systems | <u>307</u> | Total ECU's | <u>307</u> |
| ii) Number of Collection System User | <u>239</u> | Total ECU's | <u>469.83</u> |
| iii) Total all users. | <u>546</u> | | <u>776.83</u> |
- 2) Total sewer plant O/M expense \$ 49,700.00 plus annual capital reserve expense of \$14,439.00 = \$ 64,139.00 = Total shared expense for 2014.
 - a. Annual O/M plus Capital Reserve expense of \$64,139.00 divided by 776.83 ECU's equals the 2014 shared expense of \$78.70.
 - b. The O/M and Capital Reserve charge of \$78.70 will be charged to all residents with septic systems and all users on the collection system.
 - c. Total expense for septic system users \$78.70 Billing will be yearly for residents with septic systems. The billing will be sent out with the tax bill.
 - d. There will be no other charges assessed to residents with septic systems to use the WWTP sewage receiver. They will be responsible for the sewage hauler expenses.

Total expenses for users connected to the collection system

- A. Total 2014 collection system expense \$32,500.00 divided by the total ECU's of 469.83 is \$69.17 Note: This is for (1) ECU. There are different classifications and will be assigned ECU's based on the classification. A single dwelling has a classification of 1 ECU. A business may have 6 ECU's. Based on the level of services required. This following example is for a single dwelling with a classification of 1 ECU.

B. Collection System Expense Break Down

- | | |
|--|-----------------|
| 1. Collection System O/ M Expense. | \$69.17 |
| 2. Annual shared expense for O/M with the septic system users. | \$78.70 |
| 3. Annual Bond Payment <u>\$70246.00</u> divided by <u>469.83</u> ECU's. | <u>\$149.51</u> |
| 4. Total Cost for Collection System Users. (1) ECU | \$297.38 |
| 5. Quarterly Billing Payment. | \$ 74.35 |

INDIAN STREAM HEALTH CENTER

"MAXIMIZING THE QUALITY OF LIFE OF AREA RESIDENTS"

Colebrook, NH

Canaan, VT

Phone: 603-237-8336

Indian Stream Health Center is pleased to announce the opening of our new site at 253 Gale Street in Canaan. Adjacent to the Northeast Kingdom Community Action (NEKCA) office, the Indian Stream office is conveniently located in the center of town. According to Joe Patrisi, NEKCA's Executive Director, "NEKCA is very excited that ISHC's new site will be co-located in our Canaan facility, which was sold to us by the local Catholic Church to develop a community resource center. ISHC's presence brings to fruition that vision of shared services and is evidence of ISHC's continuing commitment to collaborative partnerships. This co-location will bring a one stop shop for the community to meet essential needs." NEKCA provides area low-income families with emergency housing, fuel assistance, food and clothing bank, a teen center, and is the Early Head Start office; a program designed to include home visits for children from 0 to 3 years old. These services pair nicely with ISHC's services which include primary care, behavioral health and outreach services (including assistance with a variety of applications, including Medicare, Medicaid, Social Security, and Disability; health insurance assistance, advanced directives, tobacco cessation, transportation assistance, prenatal program, developmental delay program, etc.). We are excited to bring health services to the Canaan community, making access easier for our patients in the northernmost locations of both Vermont and New Hampshire. ISHC began accepting appointments for patients in Canaan for both primary care and behavioral health in May.

An Open House is scheduled on July 18, 2014 from 3:00 to 6:00 pm. Guest speakers will include Senator Bernie Sanders, Representative Bill Johnson and Father Craig Cheney. We hope you will join us and visit our new health center site and meet our providers.

We look forward to seeing our new neighbors at our new location, and out and about in the community, as we roll out local programs including weekly tobacco cessation classes and a walking program at the Canaan Rec Park.

The Canaan site office hours are presently 8 am – 5 pm, Monday through Friday.

New Town Health Officer

Haven L. Haynes Jr.

Town Health Officers are responsible for:

- investigating possible public health hazards and risks within the municipality
- taking action to prevent, remove or destroy any such hazards
- taking action to mitigate significant public health risks
- enforcing health laws, rules and permit conditions, and taking the steps necessary to enforce orders

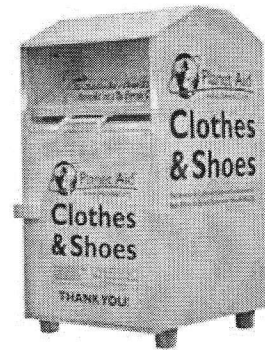
802-266-7833

PLANET AID

You are able to bring unwanted textiles for reuse and/or recycling when you visit the XYZ Transfer Station.

According to the EPA, 85% of clothing in the U.S. is thrown away instead of donated. Planet Aid has placed a clothing & shoe collection box at the transfer station for residents to drop off their unwanted textiles, rather than discarding them in the trash.

Planet Aid accepts clothing, shoes, sneakers, belts, purses, linens, pillow cases, blankets, curtains and stuffed animals. Items should be placed in plastic bags. It would be helpful if shoes were separated into their own bag. No items should be wet. We accept the Good, the Bad and the Ugly. All items are put to good use.



Join us for a Walk in the Park

Where: Canaan Rec Park

When: Monday: 11:00 a.m.

Wednesday 9:00 a.m.

For more information contact:

Sharon Belleville (ISHC): 802-266-3340

Diana Rancourt (Canaan Rec Park): 802-266-3036

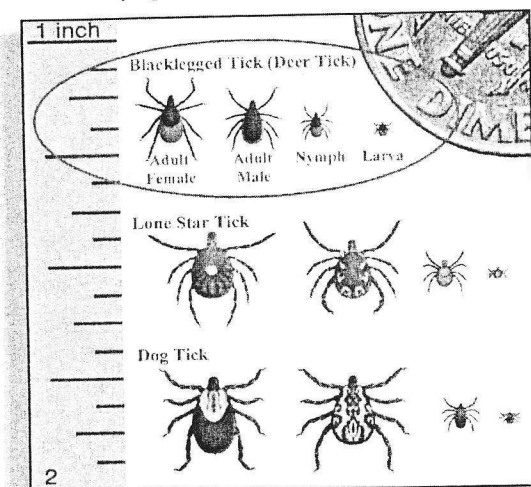
Want to start exercising but don't know where to begin? It's as easy as a walk in the park! Walking is low impact. Walking is safe— with a doctor's okay— for people with orthopedic ailments, heart conditions, more than 20% overweight.

Walking requires no special skills, it is inexpensive and it's a great way to get out and meet people!

Walking enhances mental well being, improves blood pressure and blood sugar levels, reduces the risk of coronary heart disease and some types of cancer as well as many other health benefits. What are you waiting for? Let's take a walk!!

TICKS ARE HERE

Vermont is host to three species of tick: Blacklegged Tick (Deer Tick), Lone Star Tick and Dog Tick. Some ticks can transmit diseases to humans, so it is important to know what they look like, where they live, how to prevent bites, and how to identify any associated symptoms from infection.



One of the most common tick-borne diseases in the U.S. and Vermont is Lyme disease. Deer ticks are the only species that can transmit this disease to humans. However, not all deer ticks carry the disease.

Deer ticks can get the Lyme bacteria from biting small animals that are infected. The disease is spread when the infected tick attaches to the skin to take a blood meal. In most cases, an infected tick must be attached for least 36 hours in order to transmit the disease.

Although human infection rates are small, everyone should take precautionary measures while working or playing outdoors. Ticks are found in wooded areas, high grass, and leaf litter. They are most active during the spring, summer and fall. Although most prevalent in Southern Vermont, more have been found in northern counties since 2010.

Contact your doctor if you experience one or more of these symptoms of Lyme disease.

Chills/fever
Headaches
Fatigue

Joint and muscle pain
Bulls eye/expanding rash
Swollen lymph nodes

PROTECT YOURSELF

1. Wear a hat and light-colored clothing (so ticks can be easily seen), including long-sleeved shirts and long pants tucked into boots or socks.
2. Use insect repellents.
 - Use repellents containing 20–50% DEET on exposed skin and clothing.
 - Reapply repellents as needed.
3. Use insecticides such as permethrin for greater protection.
 - Permethrin can be used on clothing, but not on skin.
 - One application to pants, socks, and shoes may be effective through several washings.
4. Check skin and clothing for ticks daily. Check hair, underarms, and groin.
5. Immediately remove ticks using fine-tipped tweezers.
 - Grasp the tick firmly, as close to your skin as possible.
 - Pull the tick's body away from your skin with a steady motion.
 - Clean the area with soap and water.
6. Wash and dry work clothes using the "hot" settings to kill any ticks present.
7. If you develop symptoms of Lyme disease, seek medical attention promptly. Tell your doctor that you work outdoors and report any tick bites.

Information for this document was gathered from Vermont Dept. of Health - Ticks Are Out 5/2012

For more information and to use the "Vermont Tick Tracker" visit:

<http://healthvermont.gov/prevent/zoontic/tickborne/ticks.aspx>

Homestead Declarations and Property Tax Adjustments

LATE FILING

A Homestead Declaration and Property Tax Adjustment Claim filed after the due date of the income return, without extension. The law allows homeowners to file up to October 15th and still declare a homestead and claim a property tax adjustment.

Filing between the due date and October 15th means:

- The property will be classified as a homestead on the town grand list and taxed at the homestead school property tax rate
- Late filing penalties will be charged
- Eligible homeowners will receive a credit on their property tax on November 1.
- Depending on when your town sends property tax bills, you may receive a revised property tax bill in September

Filing after October 15th of the current year means:

- The property will remain classified as nonresidential on the town grand list and taxed at the higher of the school property tax rates
- No property tax adjustment claim may be made
- Late filing penalties will be charged on the Homestead Declaration

LATE FILING PENALTIES

Homestead Declaration

- 3% of the education property tax on the property if the nonresidential rate is higher than the homestead rate; or in any other case the penalty is an amount equal to 8% of the education property tax on the property.

Property Tax Adjustment

- A \$15 reduction in the property tax adjustment amount

APPEALING THE LATE FILING PENALTY

The late filing penalty is billed and collected by the town. Appeals of the penalty must be appealed to the town. The law provides for a hardship appeal.

Hardship is defined as:

- (1) full-time active military duty outside of VT;
- (2) serious illness or disability of the homestead owner; or
- (3) serious illness, disability or death of an immediate family member of the homestead owner.

Phone (802) 266-3661

D.T.M.*Automotive and Small Engine Repair*Dan and Cindy Madore
Owners54 Christian Hill Rd., PO Box 51
Canaan, VT 05903

(802) 266-8602

**THIBEAULT REAL ESTATE**

59 CHRISTIAN HILL • P.O. BOX 40 • CANAAN, VERMONT 05903

thibeault@together.net

www.thibeaultrealestate.com

Odette T. Crawford, Broker

Advertise your business \$10 per issue/\$40 per year—

MAKE CHECKS PAYABLE TO CANAAN RECREATION PARK



Canaan Recreation Park Updates

The Canaan Community Recreation Park Committee and volunteers have had a successful spring. The volunteer day to install the new playground equipment was a huge success. Thank you to all the volunteers and Solomon's Store for donating the food. We've also seen the installation of two shelters to provide shade and a golf cage to practice your golf swings. With the improvements to the park we have noticed it has attracted more residents and citizens from surrounding communities from both NH and Quebec utilizing the park.

We will continue to buy equipment that appeals to all age groups while funds last. Future plans are to build a skate park, install a border around the playground equipment, install certified playground chips and install a outdoor video security system. We will continue to hold fundraisers and apply for grants for more improvements. The latest fundraiser was the snow melt guess. The winner of the fundraiser was Annette Boynton and she generously donated it back to the rec park fund. Summer plans are to hold a ribbon cutting ceremony for the new equipment.

The committee holds monthly meetings on the second Monday of the month at 3:30 p.m. at the Town Office. These are open to the public should you want to attend.

We would like to thank the townspeople and people from other towns who have contributed to the park. We still have work to be done and it will be an on-going process. Special thanks to the Neil and Louise Tillotson Fund of the NH Charitable Foundation for their grant of \$20,000, Game Time for their matching funds towards the playground equipment and the Border Lions Club for donating \$5,000.

If you see any questionable happenings, please contact a committee member or Chief Noyes. It is up to all of us to keep the park a safe place for our young people.

If interested in donating to the Rec Park fund, please send a check payable to the Canaan Recreation Park and mail to the Town of Canaan, PO Box 159, Canaan, Vermont. Please know that any contribution you make will positively impact our community and help us achieve the goals for upgrading the park.

Canaan Recreation Park Committee

Vernon Crawford, Chairman

Donald Labrecque

Jeffrey Noyes

Norman Flanagan

Diana Rancourt



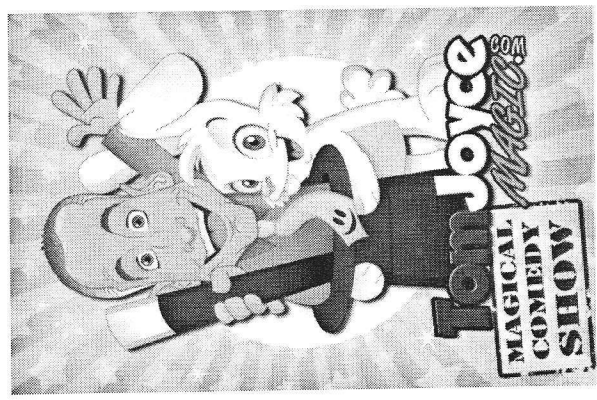
Join us on Tuesday August 12th @

2 p.m. for our end of summer reading
For amazing & humorous entertain-
ment for children and adults with

Tom Joyce

“That Funny Magic Guy”

An hour long show with new magic
tricks and new books. Ages 4+



Alice M. Ward Memorial Library

27 Park Street—PO Box 134

Canaan, VT 05903

802-266-7135

[http://alicewardmemoriallibrary.
wordpress.com](http://alicewardmemoriallibrary.wordpress.com)

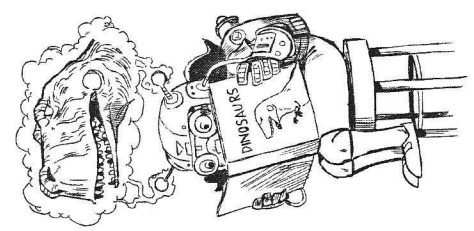
HOURS:

Monday—Thursday

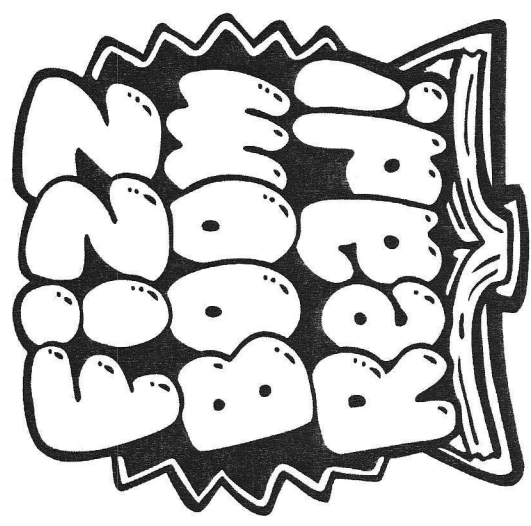
12 - 5

Fridays 12—4

Saturday 9 a.m.—1 p.m.



YOU ARE
INVITED TO



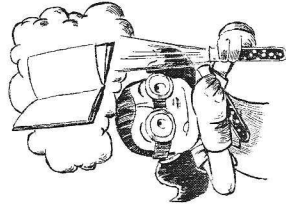
AT THE
ALICE WARD
MEMORIAL
LIBRARY'S 2014
SUMMER READING
PROGRAM!

ALL AGES!

JUNE 13TH -

802266-7135





Fizz, Boom, Pop!

Summer Fun! For 1st–5th Grade. 2:00 p.m.

Thurs. July 3rd – Oobleck

Experiments! Walk on

Oobleck watch & watch Oobleck dance!

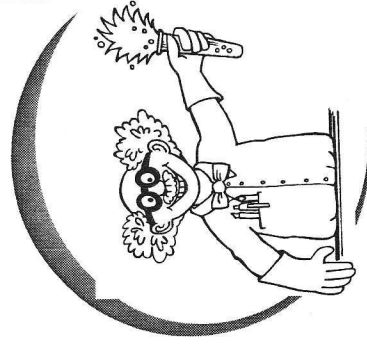
Starting on Friday **June 13th** children of all ages can come into the library to register. Kids will receive a reading log to start tracking their reading and receive a small prize just for signing up!



For each book your child reads they can earn tickets for chances to win cool scientific prizes that will be drawn at the end of the summer.

Teens & Adults are also encouraged to join the summer reading challenge! Pick up a reading log and enter for a chance to win an Amazon gift card!

There will be small weekly prizes like tattoos & stickers as well as fun incentive games like activity logs, crossword puzzles, food science match games etc to encourage weekly visits so be sure to stop in and bring your reading logs.



Have your kids outgrown their LEGO sets? Consider donating them to the library for an upcoming Lego Club! Call or stop in today with any questions!

GAMERS CLUB

will continue through the summer!

FRIDAYS 11 a.m. – Noon.

TRIVIA RAFFLE!

Each week kids can come into the library and test their science knowledge in a *weekly trivia contest*. If you get the answer correct, we'll enter your name in a raffle for a very special (and delicious!) prize drawn at the conclusion of the program. Every week will feature a new trivia question.

Playgroup & Story time with

Miss Pam

Mondays 9 am—11 am

Come join in the fun!

Birth—age 5

